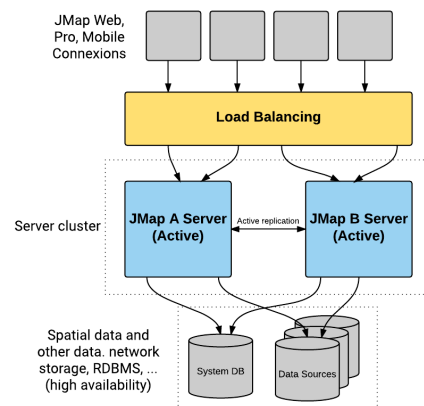


## Introducing JMap 7.

The latest version of K2 Geospatial's map based integration platform JMap is now available. We put together a list of this 7<sup>th</sup> version's new enhancements and features.

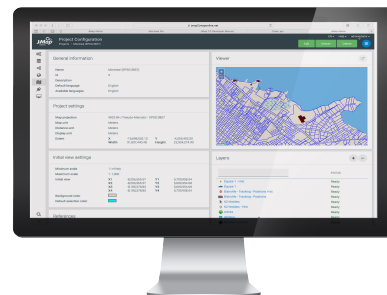
### JMap Server

- JMap Server in high availability.  
Deploy a more robust and fail over safe environment and improve performance.
- Added robustness to external resource interaction.  
Prevents blockages and delays in long queries on external resources.
- New JMap REST API.  
Perform various system queries, including data extraction and editing, via a REST interface.
- Redefined reserved sessions concept.  
Reserve an unlimited number (according to the license) of user sessions with a standard license.



### JMap Admin

- Updated and more intuitive graphic interface.
- New JMap Web project viewer.
- Redesigned form generator.  
More flexible and user-friendly with dynamic list support.
- Enhanced JMap Web application deployment.  
Enables the deployment of a dynamic layer for an entire project and cache sharing between applications.
- Multilingual project support.
- Imports data layers configured in ArcGIS Server.
- Integrates the spatial data source OpenStreetMap.



## JMap Pro

- New deployment process.
  - JMap Pro applications launcher no longer requiring the installation of Java - easier to manage for IT teams and quicker to start.
- Faster data loading with the addition of multiple connections and increased application robustness for long queries.
- Revamped printing functionalities.
- Modernized look and feel.



## JMap Web

- Updated and responsive interface.
- Added layer hierarchy.
  - Enables to manage the layer visibility or thematic display as well as their legend.
- New annotation tools.
  - Add text and drawings to the map.
- Enhanced editing features.
  - Backing up editions is now done through a transaction manager.
- Map sharing features for Twitter, LinkedIn and Facebook.



Contact us to find out more and learn how you can migrate to JMap 7

**Canada**  
+1-866-967-1211

**United-States**  
+1-617-933-7265

**Chile**  
+56 2 2595-2802

**k2geospatial.com**

*This document is provided for information purpose only. K2 Geospatial disclaims any liability in connection with this document.*

*JMap is a registered trademark of K2 Geospatial. All other trademarks are the property of their respective owners.*

*• Copyright © K2 Geospatial 2016. All Rights Reserved.*

